

# MEDIAVUE

PRE-BUILT MEDIA WALL FIREPLACE FURNITURE



CELEBRATING  
  
YEARS OF BUSINESS





# WELCOME

The MediaVue is a pre-built media wall fireplace with a unique DIY installation offering a premium construction & finish, including a luxurious 1.5m wide 3 sided electric fire. Designed and built by BeModern Ltd. who have been manufacturing bathroom furniture and electric fires for over 60 years, rest assured, the quality is unparalleled.

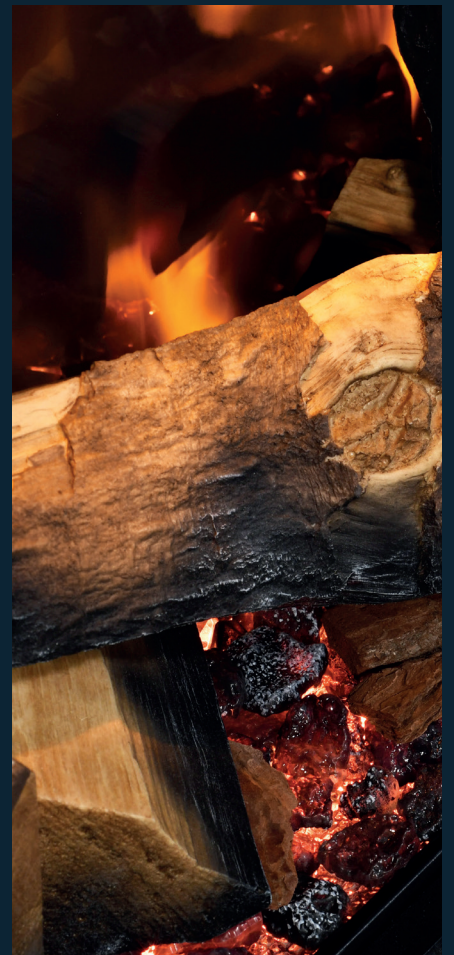
Available as floor standing or wall mounted, the MediaVue is available in 9 matt colour options and optional on-trend Oak Panelling styling. With space for your TV and sound bar, the MediaVue houses your media perfectly hiding all those unsightly cables with ease.

The soft close drawer front is available in 2 styles, with 3 separate compartments to store your remotes, controllers and other equipment. All finished off with a choice of slate or marble effect tops, adding a luxury matt finish.

The optional LED mood lighting can be installed underneath the wall mounted MediaVue or behind your TV. All controllable via the same fire remote, offering a seamless user experience.









Wall Hung / Midnight Mist / J-Pull Drawer / Oak

9 Colours

Oak Slats or Smooth

WiFi Router Storage

Easy Cable Management

MAX 65" TV

Soundbar Location

Oak Slats or Smooth

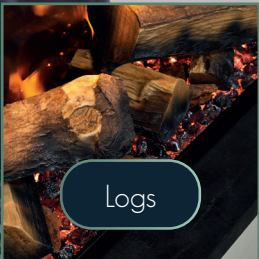
3 Sided Electric Fire

Split Logs

Soft Close Drawer

Mood Light

Floorstanding or Wall Mounted



Logs



Crystals



Pebbles



Bark



Slate







Floorstanding / Monument Grey / Slab Drawer / Smooth

# YOUR ULTIMATE MEDIA WALL



Wall Mounted / Cashmere / J-Pull Drawer / Smooth



Wall Mounted / Willow Green / Slab Drawer / Oak Slatted



FLAT WALL FIX







01

## FINISHES

Luna White Matt	Angora Grey Matt	Cashmere Matt	Pearl Grey Matt	Willow Green Matt	Dust Grey Matt	Monument Grey Matt	Indigo Matt	Midnight Mist Matt



## FLOORSTANDING OR WALL MOUNTED

VERSATILE, ADAPTABLE, CUSTOMISABLE.

BOTH OPTIONS ARE INCLUDED  
WITHIN THE BOX GIVING YOU  
THE FREEDOM AT INSTALLATION



02

## J-PULL OR SLAB SOFT CLOSE DRAWERS

SLEEK, MODERN, ERGONOMIC.

03



CREATE A MODERN MINIMAL LOOK WITH  
J-PULL OR ADD LUXURY HANDLES\* FOR A  
SOPHISTICATED FINISH. \*INC. WITH SLAB DRAWER

## OAK SLATTED OR SMOOTH PANEL/SIDE SET DETAILS

NATURAL, TEXTURED, VERSATILE.

ON TREND OAK SLATTED PANELS  
CREATE A STRIKING AESTHETIC OR  
CHOICE OF 9 SMOOTH FINISHES

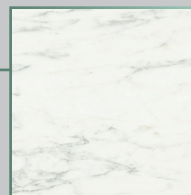
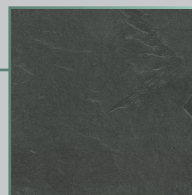


04

## DARK SLATE OR WHITE MARBLE EFFECT TOP

SOPHISTICATED, CONTRASTED, LUXURIOUS.

05



SLATE OR MARBLE TOPS COMPLETE  
THE MEDIAVUE FIREPLACE WITH A  
LUXURIOUS MATT FINISH

## OPTIONAL LED MOOD LIGHTING

ILLUMINATION ADDING AMBIENCE

ADD DRAMA WITH THE OPTIONAL  
LED MOOD LIGHTS, CONTROLLED  
VIA THE FIRE REMOTE CONTROL

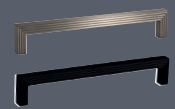


06



# MEDIAVUE - OAK SLATTED / SLAB DRAWER

ON TREND OAK PANELLING | MODERN FLAT DRAWER DESIGN + INC. HANDLE



Shown in Indigo Matt with Oak Slatted panelling detail & finished off with a Dark Slate top. The Slab soft close drawer front is shown with 2 included handles.

# MEDIAVUE - OAK SLATTED / J-PULL DRAWER

ON TREND OAK PANELLING | CONTEMPORARY HANDLELESS DRAWER DESIGN



Shown in Indigo Matt with Oak Slatted panelling detail & finished off with a Dark Slate top. The J-Pull soft close drawer front is a modern handleless design.

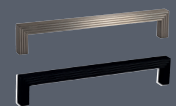


# MEDIAVUE - SMOOTH / SLAB DRAWER

MATT FINISH PANELLING | MODERN FLAT DRAWER DESIGN + INC. HANDLE



Shown in Indigo Matt with matching panelling detail & finished off with a Dark Slate top. The Slab soft close drawer front is shown with 2 included handles.



# MEDIAVUE - SMOOTH / J-PULL DRAWER

MATT FINISH PANELLING | CONTEMPORARY HANDLELESS DRAWER DESIGN



Shown in Indigo Matt with matching panelling detail & finished off with a Dark Slate top. The J-Pull soft close drawer front is a modern handleless design.



## TECHNICAL / OPTIONS

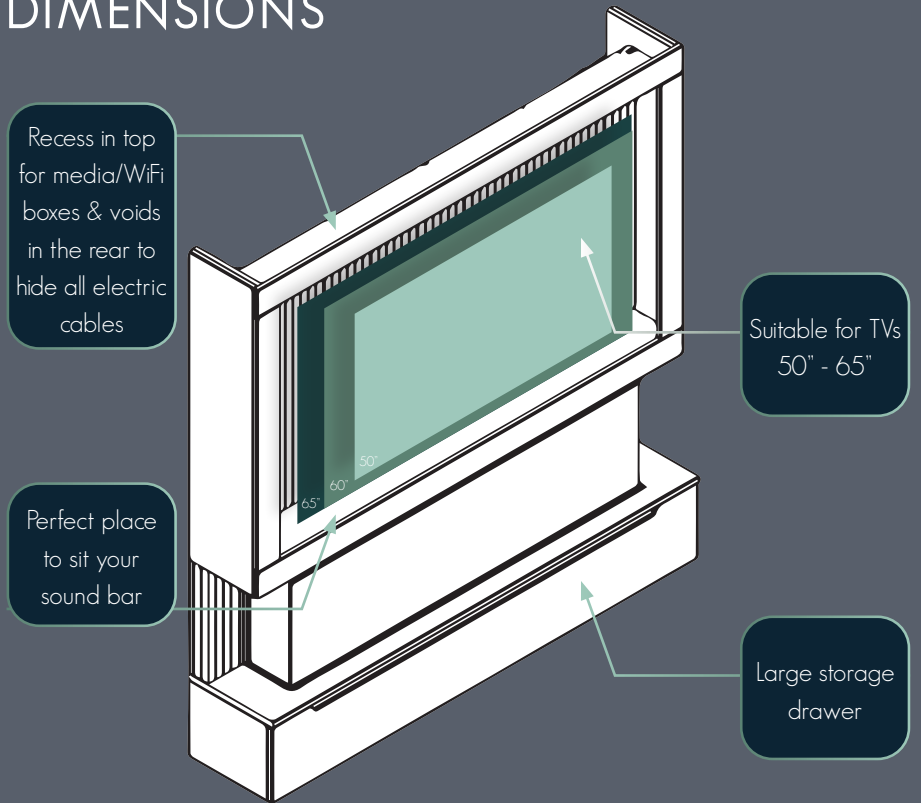
The MediaVue has been designed to effortlessly fit in most spaces with a simple and swift installation.

With space to house TVs up to 65" and a ledge for your soundbar, the MediaVue is 1.83m wide & 1.97m tall (floorstanding) / 1.88m tall (wall mounted).

You'll need an appropriate TV bracket to secure your chosen TV either onto the provided back panel (if it's suitable for bracket type) or onto the rear wall. If you choose to fix it to the rear wall, you'll need to cut a hole in the back panel.

TV & Bracket not included.

## DIMENSIONS



## ICONS

- 1.5kW heat output
- 5D flame effect +3 colour settings
- Multi - LED effect fuel bed with 13' colour options and rotation
- 7 Day Programmable Thermostatic remote control
- Eco Design Compliant
- Realistic Large Split Logs
- Fuel bed with pebbles, bark, slate & crystals
- Down lights illuminate the split logs
- Panoramic glass screen
- Glowing ember effect
- 3 year fire warranty\*
- Patented slimline heater system
- Optional Mood lighting
- 3 Sided Installation
- Glass Fronted fire
- Wall Mounted
- Floor Standing

\*Upon online registration

## 3 SIDED ELECTRIC FIRE

MediaVue's 3-sided electric fireplace offers warmth and visual appeal from every angle with a



1.5m vista.



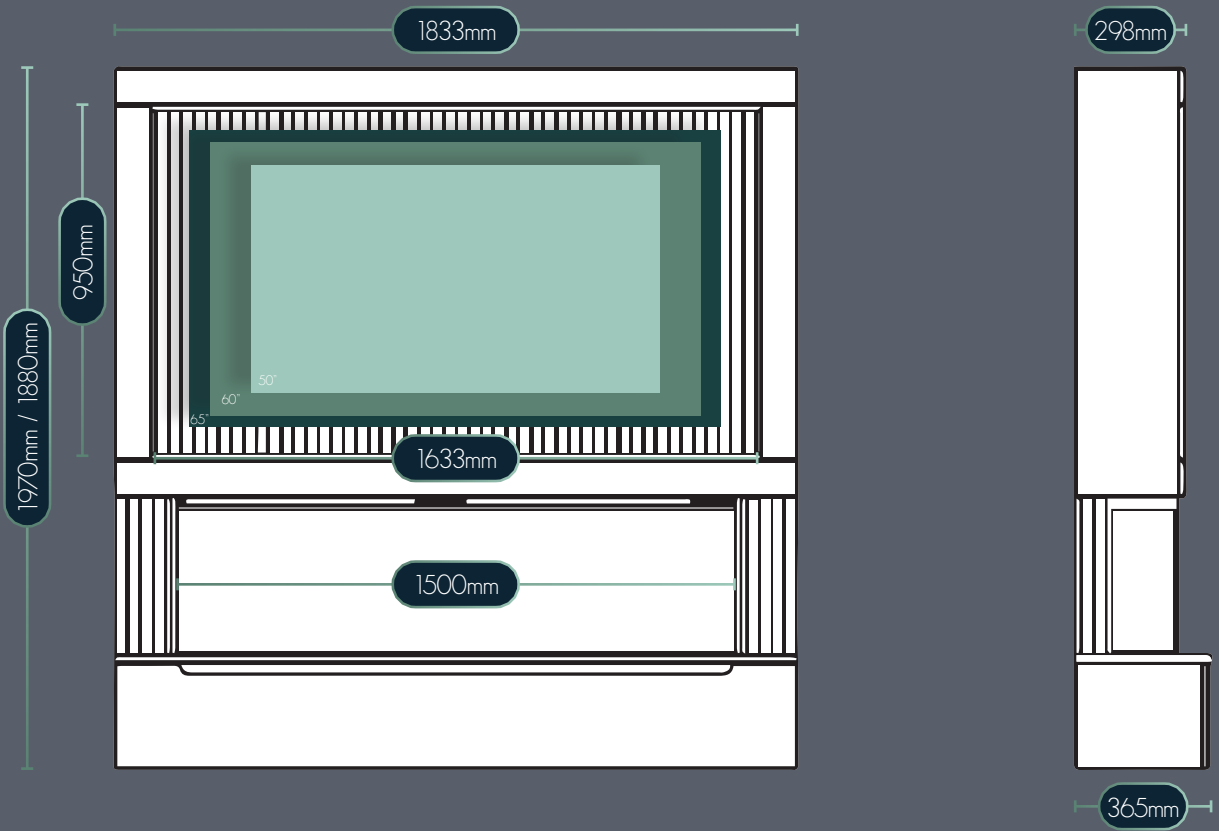
## CABLE MANAGEMENT

Effortless cable management ensures a sleek and clutter-free aesthetic, enhancing the appeal of MediaVue's sophisticated design for a seamless and organised living space.

## MINIMAL ASSEMBLY

Minimal assembly required simplifies the setup process, allowing customers to enjoy the elegance of MediaVue sooner with ease and convenience.





## COLOUR KEY

Panel / Side options



Oak Slatted



Willow Green Matt



Luna White Matt



Dust Grey Matt



Angora Grey Matt



Monument Grey Matt



Cashmere Matt



Indigo Matt

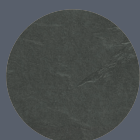


Pearl Grey Matt



Midnight Mist Matt

Base Unit top options

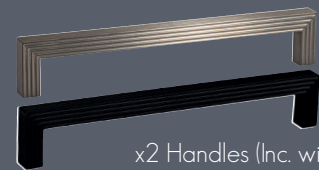


Dark Slate Effect



White Marble Effect

## HANDLES INC. SLAB



167614

167606

x2 Handles (Inc. with Slab only)

## OPTIONAL EXTRAS



LED Mood lighting  
050199

## BOXES

Included with package

- Furniture - x5 boxes
- Fire 1500 - x1 box
- Split Logs - x1 box
- Handles - x1 box (Slab only)

Optional extras

- LED Mood lighting - x1 box



P R  Z M  
REVOLUTIONIZING FLAMES



BeModern Ltd | 19/34 Bedesway | Bede Industrial Estate  
Jarrow | Tyne and Wear | NE32 3BE  
Telephone: 0191 430 9434  
Email: [enquiries@pryzmfires.com](mailto:enquiries@pryzmfires.com)



 **MADE IN BRITAIN**<sup>®</sup>

UK Registered Designs

BeModern Ltd. hold design copyright and registration of design for its product ranges. We are continually striving to improve and develop their range of products. It is important, therefore, to check details before ordering as sizes and specifications may change without prior notice. Whilst every effort is made to ensure accuracy and colour, it is not always possible to obtain perfect reproduction because of the materials and printing processes used. BeModern<sup>®</sup> Ltd. November 2024

